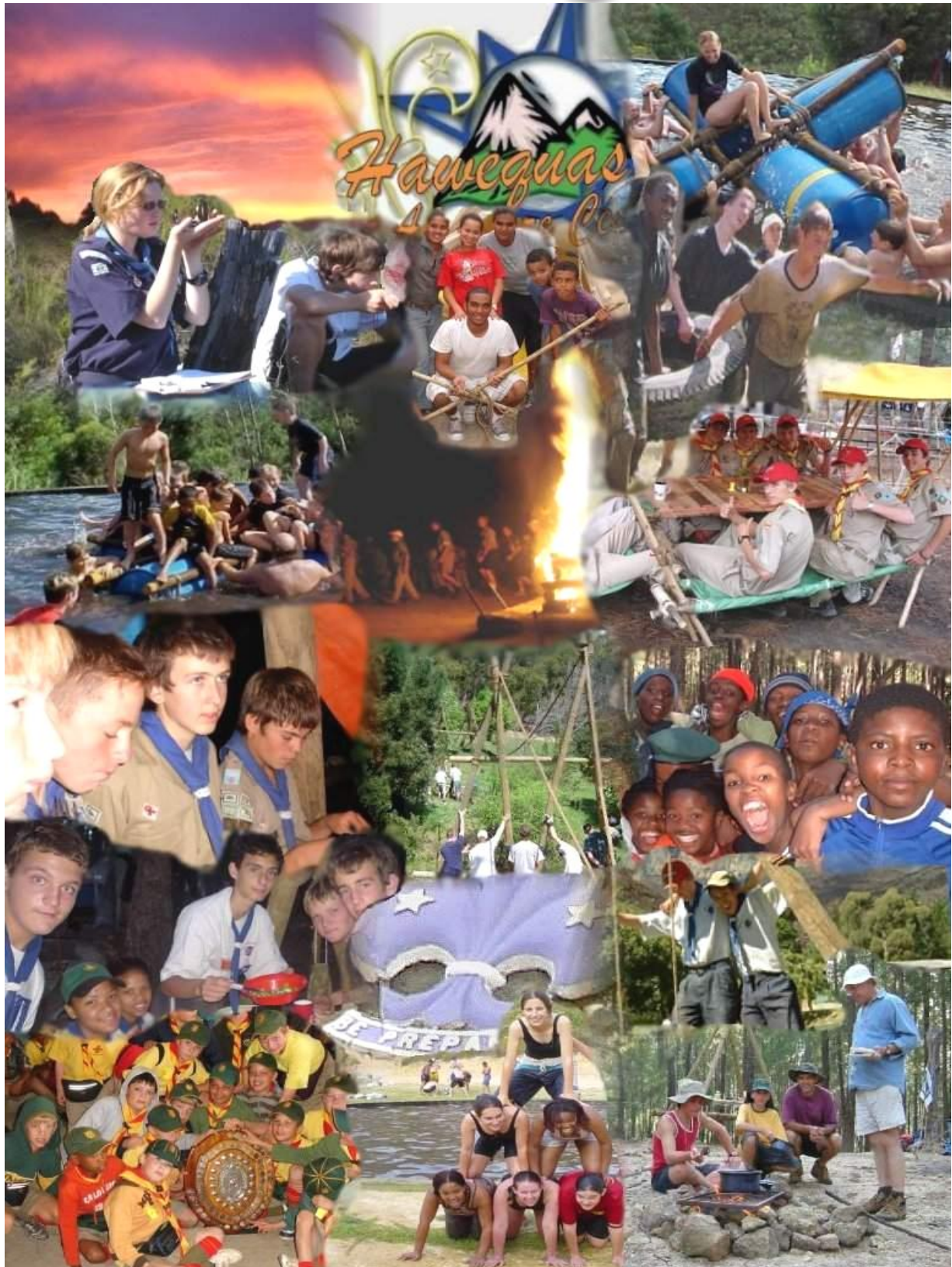


# Western Cape

# SCaR


**STRATEGY**  
 ACHIEVING  
 OUR MISSION

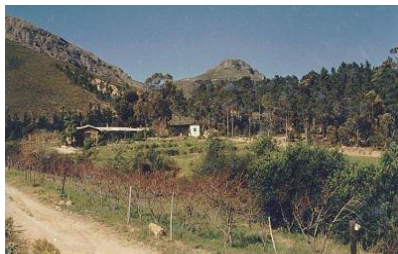




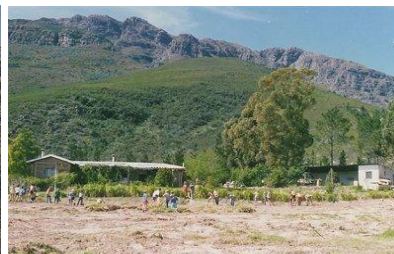
**Hawequas**, a non producing Farm 295 remainder, lies nestled below the old historical Du Toits Kloof Pass on the slopes of Hawekwa Mountains, adjacent to Dal Josafat Forest Reserve and 7km's outside Wellington. The 'Adventure Centre' as referred to of late, is about an hour's drive from Cape Town, situated in an area renowned for its scenic beauty. It has large areas of fynbos, pine forests, perennial streams and two hiking trails on the property. In a far-sighted move, the 235ha farm was bought (Scouts SA owns the land) in 1985, following the increased degradation of 'Gilcape' in Eersterivier by rapidly encroaching housing developments. **Hawequas** was a rundown farm bought 'as is' at the time, with buildings badly needing repair and a small amount of farming implements thrown into the purchase. Since then, as with amazing Gilcape, many volunteers have again contributed to it's growth, turning it into the Western Cape flagship pride of Scouting providing camping, training and so much more to the youth of SA regardless of colour, race or creed.



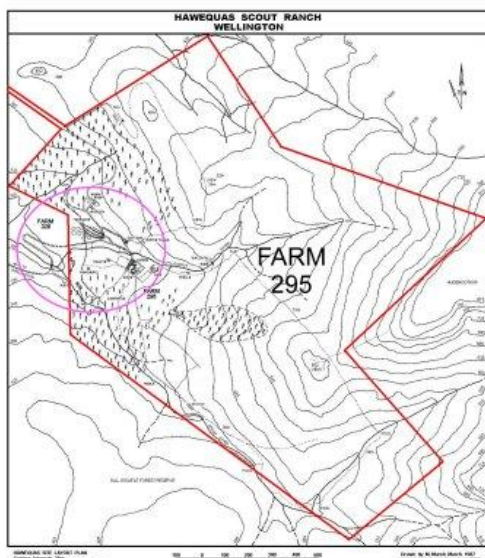
Gilcape our pride in 1979



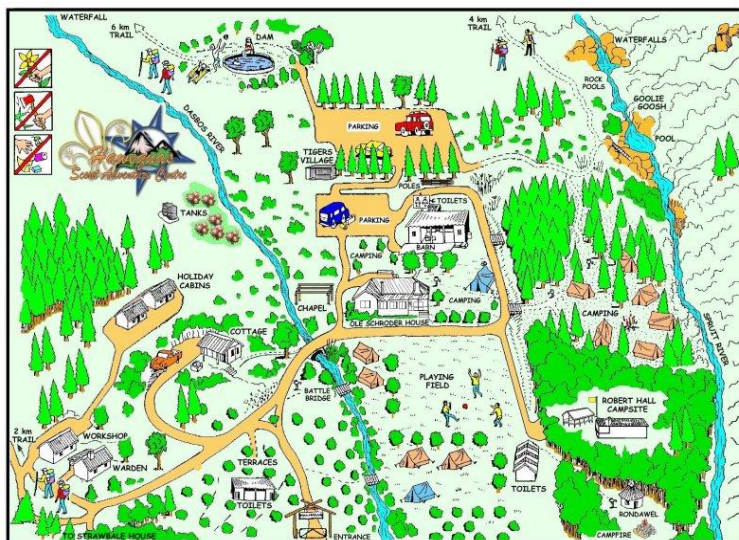
Hawequas as bought in 1985 ...to 1987 being improved by volunteers



The Main House (now Ole Schroder House) was upgraded, flooring replaced, rooms re-divided and bunk-beds built-in, with a major upgrade of late. The old Barn was upgraded to include a bunk-house, showers, ablutions and store rooms, all improved of late. The old 'labourers' houses were converted into a Wardens house, workshop, garage and store. The old Rondawel and Cottage were made liveable again. The entire farm's electrical wiring was replaced as well as major changes made to the entire water supply layout, which works on the old Roman gravity system (there's no pumps). A 15m diameter irrigation dam was built on site, serving later as a swimming pool as well. A new ablution block, with male and female facilities, was built to accommodate the growing usage of the site. Dedicated work over the years has resulted in the establishment of lawns and campsites, the planting of hundreds of indigenous trees, eradication of much alien vegetation and improvements to the roads. Latest additions have been the Robert Hall Campsite, Holiday Cabins, Terrace Campsite, Strawbale Houses, bridges and more. The ablutions are modern with flush toilets and gas heated showers.



The reduced plan on the left shows the full vastness of the farm (in red), hills, trails and existing farm roads, with the position of the main activity area and buildings (circled) – we effectively only use 8% of our total property continuously. The Ranch has two rivers running over the property, the Spruit River on the left border and the Dasbos River in the centre. The Dasbos River has a built weir up in the mountains, from which the main water source is drawn. There are two well established hiking / walking trails existing, a 3km trail up to and down the hill to the East of the complex and a 4km trail to the east and South East of the main complex. Other trails and paths make for an additional 2km of hiking and nature rambles. The mountainous terrain also offers overnight stops away from and out of sight of the main complex, yet with security of still being within the confines of the grounds.



The easy to read sketch layout (by John Waterhouse originally) on the right (found on the [Hawequas Website](#)), shows the 'high use area' mentioned on the above map. Hawequas is not geared to make large profits; this is achieved through savings made by utilizing voluntary services of members connected to Scouting, keeping labour and maintenance costs to the minimum. This allows us to charge minimum rates to users, for camping or other facilities, with incentives for longer stays. Any profits made are then re-invested into the development and maintenance of the facilities. None of the improvements over the years would have been remotely possible, had it not been for our dedicated volunteers, honorary donors and service providers to Hawequas. Donations / improvements to date amount to almost R1.6m

## HONORARY LISTINGS

### Financial Donors

Bill Hall - Robert Hall Foundation UK  
Western Cape Provincial Scout HQ  
E.J. Lombardi Trust  
Abe Bailey Trust  
Gordon Carr - South London Scout Centre  
National Donations Germany

### Service Providers

Rudolph Roscher - Junior LandCare  
Dick & Allsop - Fuel & Gas Suppliers  
Ashleen - Wellington Paint & Hardware  
Gerrit Franken - Blue Flame Gas Vasco  
Richard Pharosah Electrical Paarl  
Riaan Palvie Excavations Wellington

Adrian McMinn - Tree Felling Plumstead  
Elna Prinsloo - TopCool Appliances Wellington  
Thelma Starbuck - The Bed Centre Durbanville  
Tony Crake - Architectural Drawings  
Aussie Raad - CFW Industries (Pty) Ltd Parow  
Anton Smit - Builder Handyman Malmesbury  
Emil Krugmann - Galvatech (Pty) Ltd Bellville





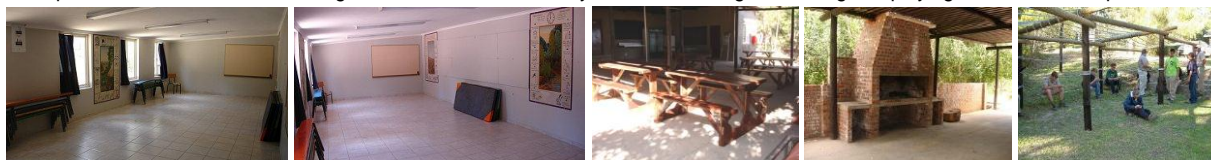


## HAWEQUAS FACILITIES

Hawequas Scout Adventure Centre has been developed from the outset to host exciting outdoor adventure programmes for youth (and adults). The Centre is geared for youth, outdoors, adventure, training, competing, conservation, fun and life experiences being priority.



**CAMPING AND OUTDOOR ADVENTURE:** There are two main camping areas, the Terraces and Pine Forest, capable of handling up to 300 campers, ablution facilities have hot showers and flush toilets, there are 10km's of hiking trails, numerous granite rock pools along the Spruit River, a concrete swimming reservoir and water activity area with floodlit, floodlit grass playing fields and a campfire circle.



**TRAINING AND CONFERENCE VENUE:** A lecture room (Barn) and large undercover outdoor activity area, numerous secluded outdoor areas for breakaway groups and activities, a large fully-equipped catering kitchen and various indoor accommodation facilities.



**LEADERSHIP AND TEAM-BUILDING PROGRAMS:** Built on the expertise and voluntary resources of **SCOUTS SA**, Hawequas offers excellent leadership and teambuilding programs for youth and adult members (on occasion to non-members as well).

### OLE SCHRODER HOUSE:

This is the most used building on site and the pride of Hawequas. There are three bedrooms fitted with (7 + 5 + 5) 17 bedbunks and a First Aid (or) room with 1 bed giving 18 in all. Three bathrooms with 2 showers and 4 toilets. A large lounge / dining / activity area with 12 folding tables and 50 chairs, overlooking the playing fields. There is also a large fireplace for those cold nights (wood can be bought on site) and a piano for evening sing-a-longs and or played (only) by competent persons. There is also a Fellowship Resource Book Centre providing hours of reading. A large undercover veranda can also be used as a dining / lounging area and has a built in braai. The kitchen is fully equip to handle 50 (or more) persons with appliances, utensils, crockery, cutlery, plates, braai grids and more. Cooking is on gas cookers with large electric oven. The main washing up area is the scullery outside the kitchen under roof. You need only bring food, sleeping bag and basics when staying over in this facility.



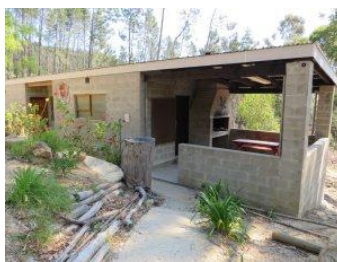
### Barn BUNKHOUSE ABLUTION:

Located behind Ole House is a large covered area with barn and bunkhouse off it. The bunkhouse has 15 bunk beds and some living space. Adjacent is the barn ablutions with 2 showers and 4 toilets, this facility used male or female depending on users.

**STRAWBALE HOUSE AND FACILITIES:** Not in use at present, located out of the high use area with plans to use this as a wilderness site.







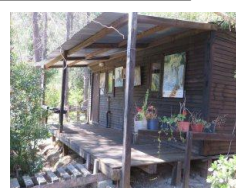
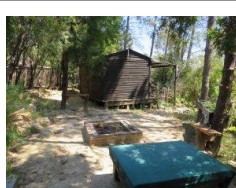
**THE ROBERT HALL CAMPSITE:** An exclusive site booked as an entity on its own, with all the necessities available and on site, having a small Bunkroom to accommodate 4 adults / persons / leaders / cooks, Kitchen like the Ole House fully equipped and stocked to cater for 40 (just bring your food), Stoep and Braai, Raised outdoor Platform shelter for dining / lectures / activities / handcrafts and level campsite on site for tents. There is an ablution block nearby, but does not form part of exclusive usage of this site. At a much later stage tents and camp equipment will also be available to users on site, although this is still being debated at present. The site is ideal for any and all who want to experience camping survival under controlled conditions.



**RONDAWEL:** A flat roof round building that sleeps and caters for 4 people. Rustic, secluded, ablutions a short walk away, just bring bedding and food.



**TIGERS VILLAGE:** Very rustic, like camping without tents. Sleeps (1 x 6 + 1 x 2) 8 in two cabins. Use barn ablutions, bring your own camping stuff (except tents). Area secluded and hired as a site on its own.



**HOLIDAY CABIN:** Situated up on the hill above the Cottage, reachable by car via the Sit Managers House. Cabin can sleep (2 rooms x 4) 8, has shower, toilet, kitchen and dining area. Amazing view, bring own bedding, food and toiletries - just like camping, but under roof with 'extras'.



**COTTAGE:** Situated away from the main buildings, has its own access road, private, fully furnished and equipped to accommodate (2 rooms x 2) 4 people (can take family of 6 by arrangement). Has an open plan lounge kitchen area. Bring own bedding and food. This building has always been a favorite family holiday retreat.



**FUTURE PLANS:** *Present donations* enable us to upgrade the main entrance roads and bridge, complete the terrace building, build an obstacle course and tower, and establishing fire safety measures. *Ahead* we have the Pine Forest Campsite development and nine other projects requiring funding ☺ Visit our [website](#)... and especially [facebook page](#).



**THE HAWEQUAS VISION:** To have Hawequas running as an International Scout Centre with life on site 24/7 by 2025. Scouts, Cubs, Rovers, Scouters, visitors and all others using the facility, must want to be there, must enjoy being there and above all must not want to leave after every visit, which must be a life-building and memorable experience. *It must be a self-sustaining, world-class, nature-based education facility* driven by the wants and needs of the youth, providing youth with: memorable and life-changing nature experiences; the opportunity to achieve personal self growth and development by triumphing over challenges in a fun and safe environment; knowledge and experiences that nurture an understanding, respect and love for the environment; the motivation to be proactive local agents of change in meeting global environmental challenges; and the gift of survival in the wild offered under controlled conditions by well-rounded and balanced leaders. *To give these opportunities to every South African young person and International youth visitor*, by creating an environment to promote equality across race, creed and culture through effective management.

